

**Dry All**<sup>®</sup>

Full Range of HVAC&R Line Products



**REPLACEABLE FILTER DRIER CORE & FILTER**

### Introduction

The DRC series of DRY ALL replaceable solid core filter driers are used in both liquid and suction lines in HVAC&R systems. The replaceable core filter driers feature a replaceable solid core capable of meeting specific application needs. The filter drier shell houses the solid core, allowing easy removal and replacement of the solid core. The customer can thus choose the type of solid core on moisture and acid removal capacity & application.

### Features

#### Replaceable core shell:

- The steel made shell compatible with all refrigerants (HFC, HFO, CFC and HCFC).
- Oven-baked, corrosion-resistant, epoxy powdered coated has salt spray life greater than 500hrs.
- Electroplated flange for corrosion resistance.
- Solder connections

#### Solid Core:

##### DA48:

- Composed of 80% Molecular Sieve and 20% Activated Alumina.
- It provides a good desiccation ability and an acid absorption capability in a wide temperature range.

##### DA48:

- Composed of 100% molecular sieve.
- It provides the best moisture removal ability among all types of core in a wide temperature range.

##### DA48:

- Composed of 48% molecular sieve, 47% Activated Alumina, 5% Activated Carbon.
- It is suitable during compressor burnout, it removes acid, impurities and other harmful elements.

#### General Specification:

- Highly efficient in moisture absorption, filtering impurity, acid, removal.
- Different types of filter cores.
- Highly durable.
- Filtering fineness: 20µm.
- 1/4" NPT Connection is Available in Dry All Core Shell
- Applicable for all common HCFC and HFC, HFO.
- Temperature range: -40°C to +70°C.
- Maximum working pressure: 45 bar.

**Dimensional Data**

Sr. No	Model	Number of cores	Connection	Dimensions				Maximum working Pressure (Bar)
				A	B	C	D	
			(inch)	(mm)	(mm)	(mm)	(mm)	
1	DRC - 485S	1	5/8" ODF	235	158	114	152	45
2	DRC - 487S	1	7/8" ODF	240	163	114	152	45
3	DRC - 489S	1	1 1/8" ODF	242	165	114	152	45
4	DRC - 4811S	1	1 3/8" ODF	242	165	114	152	45
5	DRC - 4813S	1	1 5/8" ODF	242	165	114	152	45
6	DRC - 4817S	1	2 1/8" ODF	250	163	114	152	45
7	DRC - 965S	2	5/8" ODF	385	303	114	152	45
8	DRC - 967S	2	7/8" ODF	387	308	114	152	45
9	DRC - 969S	2	1 1/8" ODF	387	310	114	152	45
10	DRC - 9611S	2	1 3/8" ODF	387	310	114	152	45
11	DRC - 9613S	2	1 5/8" ODF	387	310	114	152	45
12	DRC - 9617S	2	2 1/8" ODF	395	308	114	152	45
13	DRC - 9621S*	2	2 5/8" ODF	406.5	303.5	114	152	45
14	DRC - 9624S	2	3" ODF	403	300	114	152	45
15	DRC - 1449S	3	1 1/8" ODF	529	452	114	152	45
16	DRC - 14411S	3	1 3/8" ODF	529	452	114	152	45
17	DRC - 14413S	3	1 5/8" ODF	529	452	114	152	45
18	DRC - 14417S	3	2 1/8" ODF	537	450	114	152	45
19	DRC - 19211S	4	1 3/8" ODF	679	602	114	152	45
20	DRC - 19213S	4	1 5/8" ODF	679	602	114	152	45
21	DRC - 19217S	4	2 1/8" ODF	687	600	114	152	45
22	DRC - 19221S	4	2 5/8" ODF	692.5	589.5	114	152	45
23	DRC - 19224S*	4	3" ODF	689	586	114	152	45

**Drying Capacity**

**DA-48**

Sr. No	Model	Number of Cores	Drying capacity kg of refrigerant					
			R134a		R404A/ R507A		R407C/ R410A	
			24°C	52°C	24°C	52°C	24°C	52°C
1	DRC - 485S	1	76	72	72	66	75	64
2	DRC - 487S	1						
3	DRC - 489S	1						
4	DRC - 4811S	1						
5	DRC - 4813S	1						
6	DRC - 4817S	1						
7	DRC - 965S	2	152	144	143	133	151	128
8	DRC - 967S	2						
9	DRC - 969S	2						
10	DRC - 9611S	2						
11	DRC - 9613S	2						
12	DRC - 9617S	2						
13	DRC - 9621S*	2						
14	DRC - 9624S	2						
15	DRC - 1449S	3	228	217	215	199	226	192
16	DRC - 14411S	3						
17	DRC - 14413S	3						
18	DRC - 14417S	3						
19	DRC - 19211S	4	304	289	287	265	301	256
20	DRC - 19213S	4						
21	DRC - 19217S	4						
22	DRC - 19221S	4						
23	DRC - 19224S*	4						

The drying capacity is based on moisture presence in accordance with ARI-710 standard

Initial ppm: R134a, R410A is 1050 ppm

Initial ppm: R404A, R507A, R407C: 1020 ppm.

Final ppm: R-134a/R-407C/R-410A/R-404A/R-507A is 50 ppm.

**Drying Capacity**

**DC-48**

Sr. No	Model	Number of Cores	Drying capacity kg of refrigerant					
			R134a		R404A/ R507A		R407C/ R410A	
			24°C	52°C	24°C	52°C	24°C	52°C
1	DRC - 485S	1	89	85	84	78	88	75
2	DRC - 487S	1						
3	DRC - 489S	1						
4	DRC - 4811S	1						
5	DRC - 4813S	1						
6	DRC - 4817S	1						
7	DRC - 965S	2	178	170	168	156	176	150
8	DRC - 967S	2						
9	DRC - 969S	2						
10	DRC - 9611S	2						
11	DRC - 9613S	2						
12	DRC - 9617S	2						
13	DRC - 9621S*	2						
14	DRC - 9624S	2						
15	DRC - 1449S	3	267	255	252	234	264	225
16	DRC - 14411S	3						
17	DRC - 14413S	3						
18	DRC - 14417S	3						
19	DRC - 19211S	4	356	338	336	312	352	300
20	DRC - 19213S	4						
21	DRC - 19217S	4						
22	DRC - 19221S	4						
23	DRC - 19224S*	4						

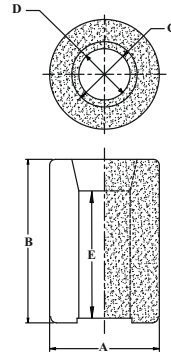
# REPLACEABLE FILTER DRIER CORE & FILTER

## IMAGES & DRAWINGS

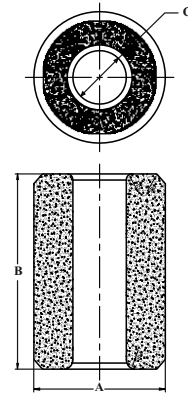
### Replaceable Core



### DIMENSIONAL DATA



DRAWING - 1



DRAWING - 2

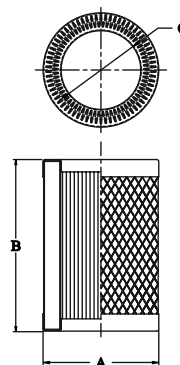
## MODELS AVAILABLE

SR NO.	MODEL NO.	DIMENSIONS										REFER DRAWING NO.
		A		B		C		D		E		
		(mm)	(inch)	(mm)	(inch)	(mm)	(inch)	(mm)	(inch)	(mm)	(inch)	
<b>SERIES 1 (REPLACEABLE FILTER DRIER CORE)</b>												
1	DA-48	95	3.74	140	5.51	60	2.36	45.5	1.75	105	4.13	1
2	DB-48	95	3.74	140	5.51	60	2.36	45.5	1.75	105	4.13	1
3	DC-48	95	3.74	140	5.51	60	2.36	45.5	1.75	105	4.13	1
4	DC-100	123	4.85	165	6.50	52	2.05	-	-	-	-	2

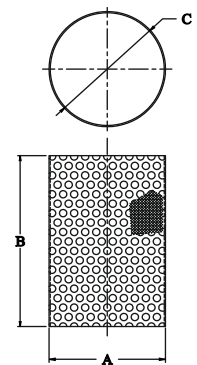
### Replaceable Filter



### DIMENSIONAL DATA



DRAWING - 3



DRAWING - 4

SR NO.	MODEL NO.	DIMENSIONS						REFER DRAWING NO.
		A		B		C		
		(mm)	(inch)	(mm)	(inch)	(mm)	(inch)	
<b>SERIES 2 (REPLACEABLE FILTER DRIER CORE)</b>								
1	DPE-48-BD	90	3.54	140	5.51	60	2.56	3
2	DSS-48	95	3.54	140	5.51	NA	NA	4
3	DPE-100-BD	120	4.73	165	6.49	55	2.16	3

**Check Hologram for  
Genuine Product**

Manufactured by:

**Dry All**  
Full Range of HVAC&R Line Products

**SAFE A&T Technology Private Limited**

D-4, MIDC, Phase II, Dombivali (E),

Dist. Thane-421 201.

T : +91-(0)-251-2870680/81/82

M : +91-9619933838

Customer Care : +91 8181 994 994

E : info@dryall.net

W : www.dryall.net

File No.: L/S&M/01

REV24-02-02-00