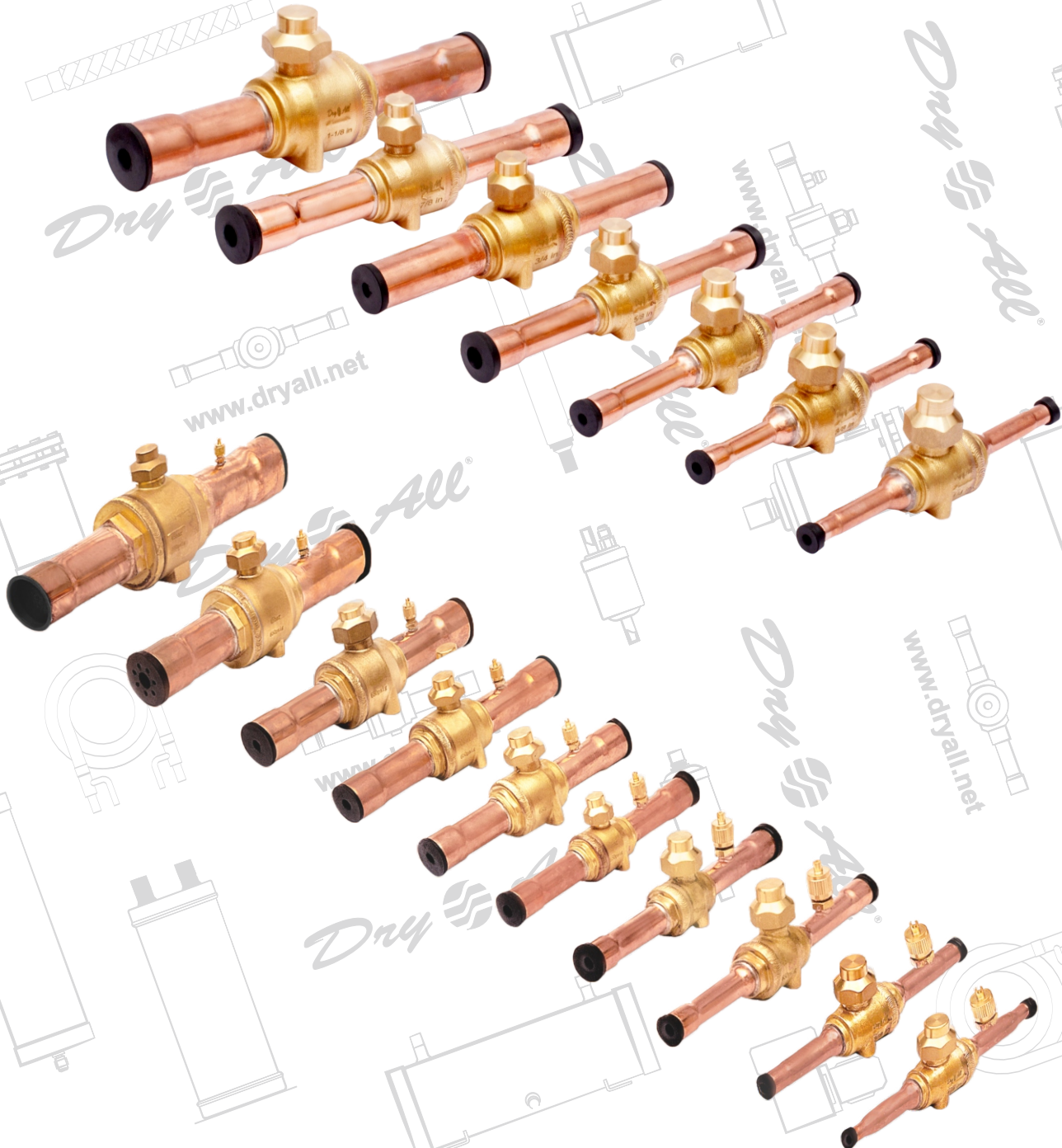


**Dry All**

Full Range of HVAC&R Line Products



**BALL VALVES**

### Introduction

Dry All Ball valve is a two-way valve that is operated manually to open or close the flow of refrigerant. These are expertly crafted manual shut-off valves designed to facilitate bi-directional flow. It incorporates single turn on/off mechanisms to ensure that it is fully open or closed. The unique featured steel ball mechanism allows 100% opening or closure.

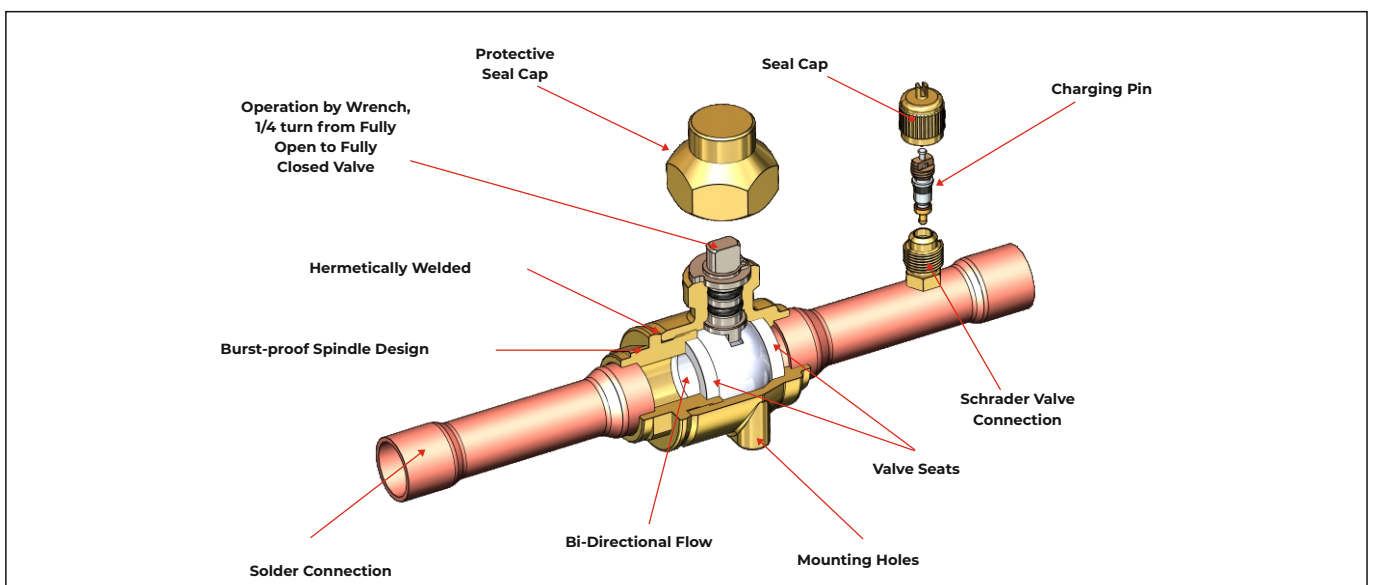
The construction of valve includes brazed connections and hermetically welded joints to guarantee a sturdy yet lightweight, slim-line body design. Meticulous attention to design, weld quality, and the selection of premium sealing materials empowers these ball valves to surpass even the most stringent demands, such as high working pressures while handling R410A refrigerant.

The construction of valve includes brazed connections and hermetically welded joints to guarantee a sturdy yet lightweight, slim-line body design. Meticulous attention to design, weld quality, and the selection of premium sealing materials empowers these ball valves to surpass even the most stringent demands, such as high working pressures while handling R410A refrigerant.

Dry All Ball valves serve as manually operated shut-off valves that efficiently handle bi-directional flow in refrigeration, freezing, and air conditioning systems. Their versatility allows them to be utilized in liquid, suction, and hot gas lines. Specifically, the bidirectional ball valves offer the option of being delivered with or without an external access port. To enhance safety and prevent any inadvertent cap removal or tampering during service intervals, these valves have vent hole which permits a safe discharge of the refrigerant present under the cap. This feature ensures the integrity of the valve's functionality and maintenance procedures.

Based on years of experience in manufacturing a full range of HVAC&R line products, Dry All adeptly applies its knowledge to a variety of products.

### Key Features



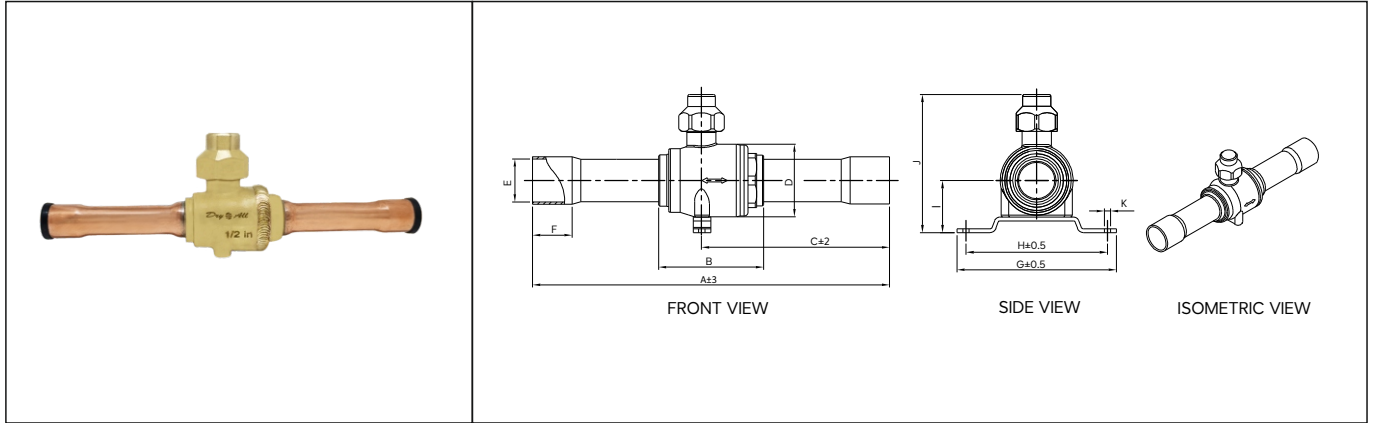
Application	Advantages
<ul style="list-style-type: none"> <li>• Dry All Ball valves are used in hot gas, liquid and suction lines in all refrigeration and air conditioning systems with fluorinated refrigerants.</li> </ul>	<ul style="list-style-type: none"> <li>• Full flow with minimum pressure drop.</li> <li>• Bi-directional flow, i.e. valve orientation is unimportant.</li> <li>• Slimline design ensures easy operational handling.</li> <li>• Burst proof spindle design prevents liquid from being trapped internally.</li> <li>• Valve seat of special Teflon to secure maximum tightness and a long lifetime.</li> <li>• The available access port saves money if service of the system is necessary.</li> </ul>

## Technical Properties

- Ball valves can be used for all fluorinated refrigerants such as CFC, HCFC, HFC, HFO & HC refrigerants and oils.
- Temperature range: -40°C to +150°C.
- Max. Working pressure (PS/MWP): 45bar (650 psig).
- Test pressure: 67.5bar (970 psig).
- Body Material: Forged brass (EN 12420, EN12165, and CW617N).
- Tube Material: Copper (EN12735-1).
- Leak rate is less than 2.8g/year.
- Approvals: RoHS.

## BALL VALVES

### Image & Technical Data



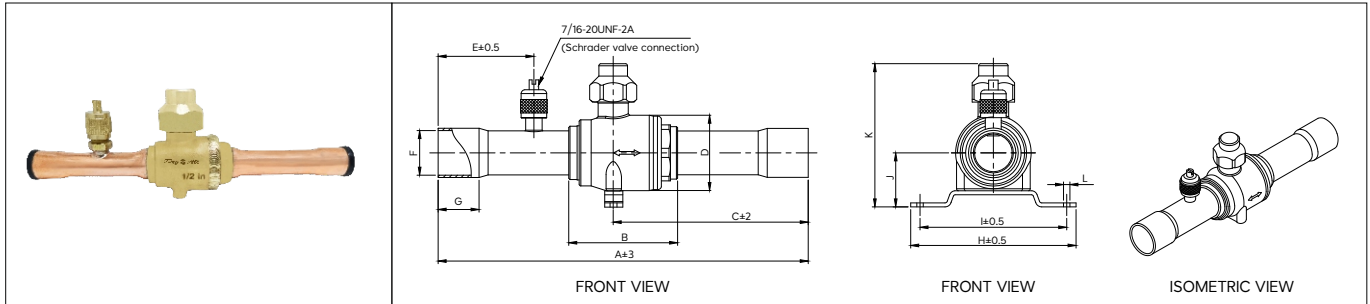
### Available Models (without Schrader Valve)

S/N	Model No	End Connection	K <sub>v</sub> Value (m <sup>3</sup> /hr)	Port Diameter of Inside Ball (mm)	A		B		C		D	
					mm	Inch	mm	Inch	mm	Inch	mm	Inch
1	DABV-02S	1/4" ODF	0.8	13.0	134	5.27	42	1.65	73	2.87	28	1.10
2	DABV-03S	3/8" ODF	3.8		134	5.27	42	1.65	73	2.87	28	1.10
3	DABV-04S	1/2" ODF	5.6		156	6.14	42	1.65	84	3.30	28	1.10
4	DABV-05S	5/8" ODF	10.1		156	6.14	42	1.65	84	3.30	28	1.10
5	DABV-06S	3/4" ODF	20.4	19.0	166	6.53	54	2.12	91.3	3.59	37	1.45
6	DABV-07S	7/8" ODF	28.2		184	7.24	54	2.12	100.3	3.94	37	1.45
7	DABV-09S	1-1/8" ODF	52	24.5	204	8.03	64.5	2.53	113	4.44	49	1.92

S/N	E		F		G		H		I		J		K
	mm	Inch	mm	Inch	mm	Inch	mm	Inch	mm	Inch	mm	Inch	mm
1	Ø6.4	0.25	8	0.31	62	2.44	49.5	1.94	21	0.82	57.5	2.26	Ø4.5x6x2 SLOT
2	Ø9.6	0.37	8	0.31	62	2.44	49.5	1.94	21	0.82	57.5	2.26	Ø4.5x6x2 SLOT
3	Ø12.8	0.5	11.5	0.45	62	2.44	49.5	1.94	21	0.82	57.5	2.26	Ø4.5x6x2 SLOT
4	Ø15.95	0.62	13	0.51	62	2.44	49.5	1.94	21	0.82	57.5	2.26	Ø4.5x6x2 SLOT
5	Ø19.1	0.75	16	0.62	82	3.22	70	2.75	26.5	1.04	67.5	2.65	Ø4.5x6x2 SLOT
6	Ø22.3	0.87	20	0.78	82	3.22	70	2.75	26.5	1.04	67.5	2.65	Ø4.5x6x2 SLOT
7	Ø28.7	1.12	23	0.90	82	3.22	69	2.71	34	1.33	88	3.46	Ø4.5x6x2 SLOT

## BALL VALVES

### Image & Technical Data



### Available Models (with Schrader Valve)

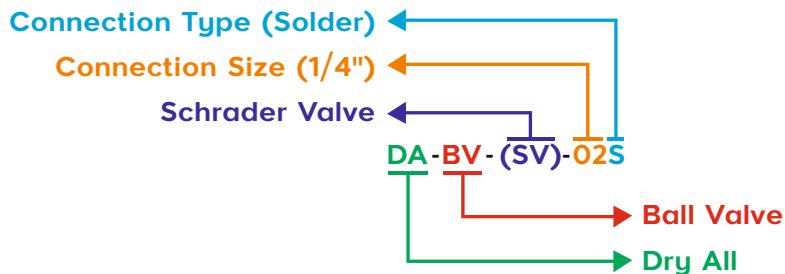
S/N	Model No	End Connection	K <sub>v</sub> Value (m <sup>3</sup> /hr)	Port Diameter of Inside Ball (mm)	A		B		C		D		E	
					mm	Inch	mm	Inch	mm	Inch	mm	Inch	mm	Inch
1	DABVSV-02S	1/4" ODF	0.8	13.0	134	5.27	42	1.65	73	2.87	28	1.10	26	1.02
2	DABVSV-03S	3/8" ODF	3.8		134	5.27	42	1.65	73	2.87	28	1.10	26	1.02
3	DABVSV-04S	1/2" ODF	5.6		156	6.14	42	1.65	84	3.30	28	1.10	32	1.25
4	DABVSV-05S	5/8" ODF	10.1		156	6.14	42	1.65	84	3.30	28	1.10	34	1.33
5	DABVSV-06S	3/4" ODF	20.4	19.0	166	5.53	54	2.12	91.3	3.59	37	1.45	37	1.45
6	DABVSV-07S	7/8" ODF	28.2		184	7.24	54	2.12	100.3	3.94	37	1.45	42	1.65
7	DABVSV-09S	1-1/8" ODF	52	24.5	204	8.03	64.5	2.53	113	4.44	49	1.92	45	1.77
8	DABVSV-11S	1-3/8" ODF	80.9	30	244	9.6	72.5	2.85	133	5.23	59.5	2.34	55	2.16
9	DABVSV-13S	1-5/8" ODF	196	36.5	258	10.15	86.5	3.40	141	5.55	70	2.75	55	2.16
10	DABVSV-17S	2-1/8" ODF	248	50	303	11.92	100.5	3.95	154	6.06	90	3.54	65	2.55
11	DABVSV-21S	2-5/8" ODF	248		302.5	11.90	100.5	3.95	154	6.06	90	3.54	72	2.55

S/N	F		G		H		I		J		K		L
	mm	Inch	mm	Inch	mm	Inch	mm	Inch	mm	Inch	mm	Inch	mm
1	Ø6.4	0.25	8	0.31	62	2.44	49.5	1.94	21	0.82	57.5	2.26	Ø4.5x6x2 SLOT
2	Ø9.6	0.37	8	0.31	62	2.44	49.5	1.94	21	0.82	57.5	2.26	Ø4.5x6x2 SLOT
3	Ø12.8	0.5	11.5	0.45	62	2.44	49.5	1.94	21	0.82	57.5	2.26	Ø4.5x6x2 SLOT
4	Ø15.95	0.62	13	0.51	62	2.44	49.5	1.94	21	0.82	57.5	2.26	Ø4.5x6x2 SLOT
5	Ø19.1	0.75	16	0.62	82	3.22	70	2.75	26.5	1.04	67.5	2.65	Ø4.5x6x2 SLOT
6	Ø22.3	0.87	20	0.78	82	3.22	70	2.75	26.5	1.04	67.5	2.65	Ø4.5x6x2 SLOT
7	Ø28.7	1.12	23	0.90	82	3.22	69	2.71	34	1.33	88	3.46	Ø4.5x6x2 SLOT
8	Ø35.1	1.38	25.8	1.01	105	4.13	86	3.38	40	1.57	98.7	3.88	Ø6.5x10x2 SLOT
9	Ø42.1	1.65	28	1.10	110	4.33	91	2.58	47	1.85	121	4.76	Ø6.5x10x2 SLOT
10	Ø54.1	2.12	35	1.37	128	5.03	106	4.17	57	2.24	139.5	5.49	Ø6.5x10x2 SLOT
11	Ø67.1	2.64	34	1.33	128	5.03	106	4.17	57	2.24	139.5	5.49	Ø6.5x10x2 SLOT

## BALL VALVES

**Dry All**  
Full Range of HVAC&R Line Products

### Nomenclature



### Flow Condition

<p>Flow In</p> <p>Flow Out</p>	<p>Flow In</p> <p>No Flow</p>
<b>Condition : Open</b>	<b>Condition : Close</b>

### Quality in everything we do

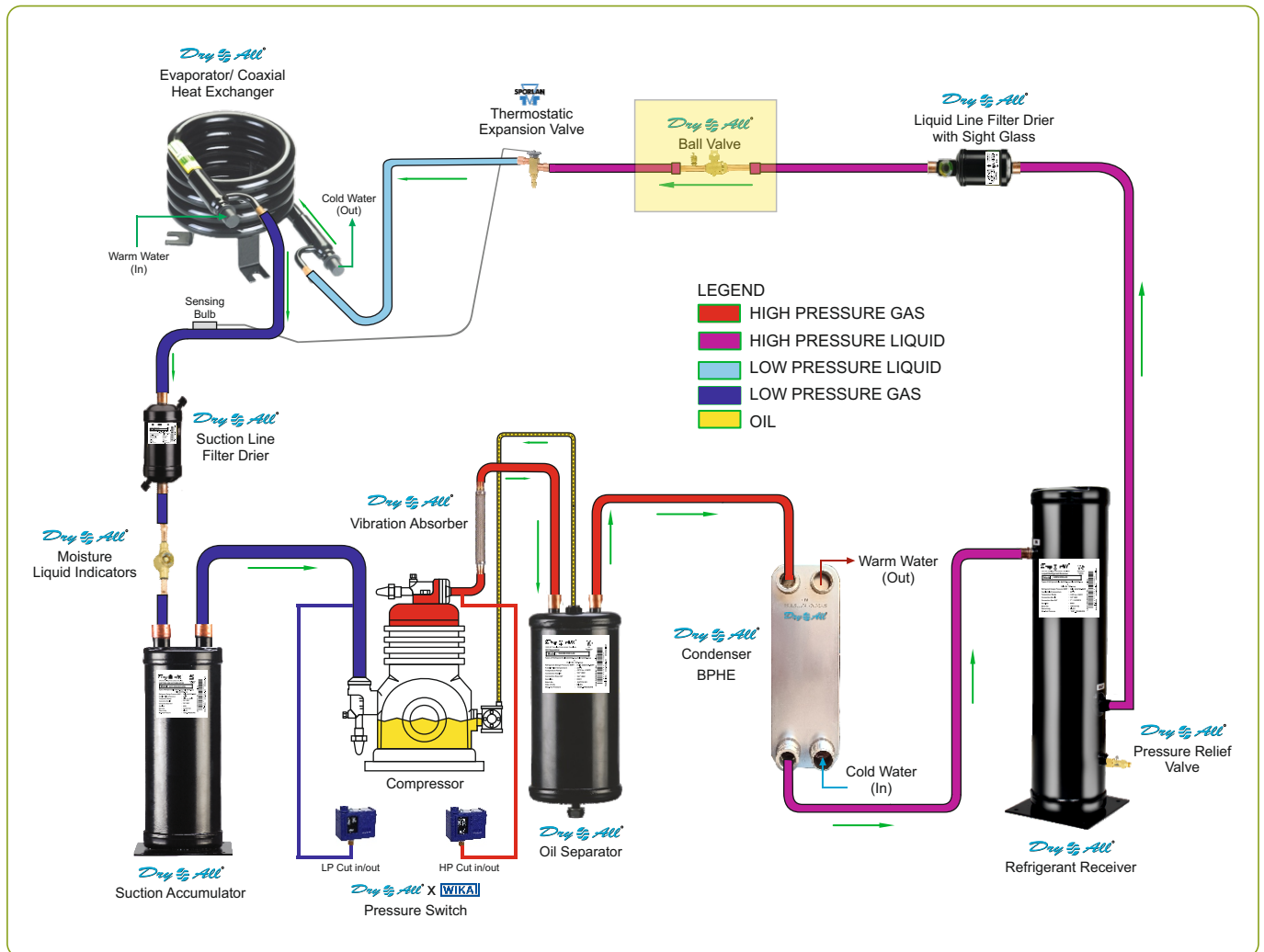
Dry All Ball valves are integral to comprehensive line of refrigeration components, encompassing a wide array of high-tech products. Each component undergoes rigorous testing, adhering to the most stringent standards to ensure top-notch quality.

If the specific component you seek is not listed in this brochure or if you have unique requirements, rest assured that Dryall's partner wholesalers and our local team are here to assist you. They are dedicated to providing guidance and support, going above and beyond to meet your individual needs.

## BALL VALVES

**Dry & All®**  
Full Range of HVAC&R Line Products

### Product Installed In refrigeration Cycle





**Note:** Dry All reserves the right to alter its products without notice and will not accept any responsibility for possible errors in catalogues, brochures and other printed materials. Imitation / reproduction of information from this catalogue in part or whole cannot be done without prior approval in writing from our company.

Check Hologram for  
Genuine Product

**Dry All®**  
Full Range of HVAC&R Line Products

Manufactured by:

**SAFE A&T Technology Private Limited**

D-4, MIDC, Phase II, Dombivali (E),  
Dist. Thane-421 201.

T : +91-(0)-251-2870680/81/82

Customer Care : +91 8181 994 994

E : [info@dryall.net](mailto:info@dryall.net)

W : [www.dryall.net](http://www.dryall.net)

File No.: L/S&M/01

REV: 00