



Full Range of HVAC&R Line Products



LIQUID REFRIGERANT RECEIVER (HORIZONTAL)

Introduction

In a refrigeration system, the liquid refrigerant receiver has multiple uses. When a refrigeration system is operating normally, it serves as a reservoir for the refrigerant, guarantees that a reserve amount of refrigerant is available during time of high load demands, and offers a location to store the refrigerant charge during either automatic or service pump downs. The pump down of the refrigeration system can be done by storing the liquid refrigerant in the receiver provided they are sized correctly. This is extremely desired to allow a system to be serviced or repaired with ease. It collects the condensed liquid refrigerant leaving from the condenser outlet and feeds liquid to the liquid line of the system.

Receivers internal volume allows it to store the liquid refrigerant. Hence the refrigeration system can respond to varying heat loads by varying the refrigerant flow rate. For this a thermostatic expansion valve is used in combination with receiver. Dry All liquid refrigerant receivers are of two types vertical and horizontal.

Applications

- Liquid refrigerant receiver is installed in refrigeration and air conditioning system.
- It is installed between condenser and expansion device to supply continuous flow to expansion device.
- It also stores refrigerant charge during service of system.

Features

- Dry All, manufacturers wide range of liquid receivers in both vertical and horizontal configurations. Vertical are mounting flange type liquid receivers and also mounting stud type liquid receivers.
- Dry All specially designed to achieve maximum refrigerant flow rate and minimum pressure drop.
- Vertical deep draw type liquid receivers are also available for special purpose cases. Receivers with NPT connection are also available on request.

Mounting

There are two basic mounting options for receivers:

1. Flange type: In big installations, stand-alone receivers are mounted using this method because it offers the maximum stability.
2. Stud type: The installation team can attach the receiver to a plinth by using the stud that is provided. This approach is frequently employed when the receiver is a component of a pack of several compressors.

Technical Specifications

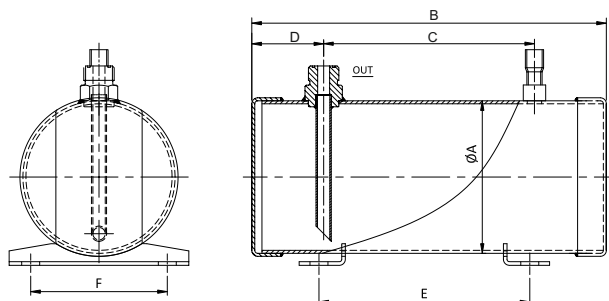
- Maximum working pressure= 450 psig
- Design temperature = -10°C to 100°C
- Compatible with HFC's and HCFC's and their associated oils.
- Designed for maximum flow of refrigerant and minimum pressure drop

LIQUID REFRIGERANT RECEIVER (HORIZONTAL)

IMAGE, DRAWINGS & MODELS AVAILABLE



IMAGE



DRAWING

Sr. No.	Model No	UL Certification	Volume (Ltr)	Connection size		Dimensions											
						ØA		B		C		D		E		F	
				Inlet	Outlet	mm	inch	mm	inch	mm	inch	mm	inch	mm	inch	mm	inch
1	LRRH-3189-4ORN	UL	0.77	1/2" 'O' Ring*	1/2" 'O' Ring*	76.2	3	189	7.44	As per customer requirement	60	2.36	As per customer requirement	As per customer requirement			
2	LRRH-35269-4ORN	UL	1.45	1/2" 'O' Ring*	1/2" 'O' Ring*	88.9	3.5	269	10.59								
3	LRRH-35490-4ORN	UL	1.90					490	19.29								
4	LRRH-4267-3Sx5R	UL	2.80	3/8" ODF	1"-14 ORFS*	101.6	4	267	10.51								
5	LRRH-4439-3Sx5R	UL	3.00					439	17.28								
6	LRRH-4453-3Sx5R	UL	3.10					453	17.83								
7	LRRH-5296-3Sx5R	UL	3.20	3/8" ODF	1"-14 ORFS*	127	5	296	11.65								
8	LRRH-5376-3Sx5R	UL	3.60					376	14.80								
9	LRRH-5401-5Sx5R	UL	4.40					401	15.79								
10	LRRH-5456-5Sx5R	UL	5.00					456	17.95								
11	LRRH-5468-5Sx5R	UL	5.30	5/8" ODF	1"-14 ORFS*	127	5	468	18.43								
12	LRRH-5566-5Sx5R	UL	6.50					566	22.28								
13	LRRH-5680-5Sx5R	UL	7.80					680	26.77								
14	LRRH-6330-5Sx5R	UL	5.50	5/8" ODF	1"-14 ORFS*	152.4	6	330	12.99								
15	LRRH-6465-5Sx5R	UL	6.95					465	18.31								
16	LRRH-6770-5Sx5R	UL	12.50					770	30.31								
17	LRRH-8593-12Rx12R	Non UL	20.00	1-3/4"-12 ORFS*	1-3/4"-12 ORFS*	203.2	8	593	23.35								
18	LRRH-8884-12Rx12R	Non UL	30.00					884	34.80								
19	LRRH-105962-12Rx12R	Non UL	48.00					962	37.87								
20	LRRH-1051100-17RX17R	Non UL	56.00	2-1/4" ORFS*	2-1/4" ORFS*	266.7	10.5	1100	43.31								

*Receiver with NPT Connection are also provided as per Customer Requirement

Maximum working pressure: 450 psig

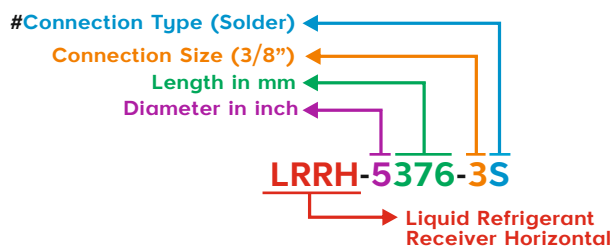
Design temperature: -10° C to 100° C

[*] Denotes Connections are of Steel

Rotolock valve has to be ordered separately.

#	Connection Type	Description
	ORN	'O' Ring
	ORFS	Rotolock with O ring face seal
	ODF	Outer Diameter Female

Nomenclature



LIQUID REFRIGERANT RECEIVER (HORIZONTAL)



Customization

Diameter size available (Inch)	3, 3.5, 4, 5, 6, 8, 10.5
Length available (mm)	As per Customer requirement
Connction type	Solder, O-Ring, Flare, Rotolock
Sub Ports (NPT)	Available
Sight glass	Available
Mounting Type	Bracket Mouting
Mounting size	As per Customer requirement
Certification	UL, CE - As per customer requirement
Maximum Working Pressure Rating	450 Psig (31 bar)
Suitable for Refrigerant	R22, R123, R125, R134a, R401A, R401B, R402A, R402B, R404A, R407A, R407B, R407C, R408, R409, R500, R502, R507, R509

Installation Guidelines

- Install receiver in liquid line.
- Make sure that the same is installed as close to the condenser outlet as possible.
- Choose receiver model according to Dry All's capacity rating only.
- Ensure that incoming liquid line tubing is connected to the connection marked "IN"
- Always install the receiver upright and vertical position.
- Piping between condenser and receiver should be allowed to arrange free drainage.
- The location of receiver should be such that it will not heat the refrigerant inside it. (e.g. direct sunlight coming on receiver may cause heating).

Note: Dry All reserves the right to alter its products without notice and will not accept any responsibility for possible errors in catalogues, brochures and other printed materials. Imitation / reproduction of information from this catalogue in part or whole cannot be done without prior approval in writing from our company.

Check Hologram for
Genuine Product



Full Range of HVAC&R Line Products

Manufactured by:

SAFE A&T Technology Private Limited

D-4, MIDC, Phase II, Dombivali (E),
Dist. Thane-421 201.

T : +91-(0)-251-2870680/81/82

Customer Care : +91 8181 994 994

E : info@dryall.net

W : www.dryall.net

File No.: L/S&M/01
REV: 00