

Dry All®

Full Range of HVAC&R Line Products



DC-100



**REPLACEABLE CORE SHELL
(DRC 100 SERIES)**

REPLACEABLE CORE SHELL (DRC 100 SERIES)



Introduction

Introducing Dry All Replaceable Core Shells 'DRC 100' Series, the ultimate upgrade for your HVAC&R systems.

Designed for superior performance and durability, the High Capacity DRC 100 Series offers enhanced efficiency and reduced pressure drop.

With increased length and diameter for optimal flow, these shells are built with robust steel connections that ensure maximum strength and durability.

Easily brazed using silver brazing alloy, the DRC 100 Series also features a larger diameter and longer length core labelled as DC 100, increasing drying efficiency by 2.5 times compared to the DC 48 Core.

Choose Dry All High Capacity Replaceable Core Shells for unparalleled performance and reliability in your HVAC&R applications.

Key Features

- **Increased Length for Enhanced Capacity:** With a length of 659 mm provides more space for improved functionality.
- **Larger Diameter for Increased Flow Capacity:** Featuring a diameter of 152 mm, DRC 100 series core shells offer optimal flow and enhanced efficiency.
- **Higher Drying Capacity:** Our shells accommodate the DC-100 Drier Core (3 pcs), offering superior moisture removal.
- **Minimal Pressure Drop:** Expertly engineered to maintain minimal pressure drop, ensuring your systems operate smoothly.
- **Superior Strength & Durability:** Built with robust STEEL connections, our shells provide outstanding durability and performance under high-pressure conditions.
- **Optimized Connection Size:** Available in 2-1/8" and 2-5/8" connection sizes, perfect for larger HVAC&R systems.

REPLACEABLE CORE SHELL (DRC 100 SERIES)



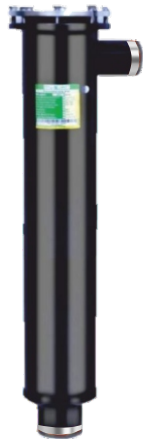
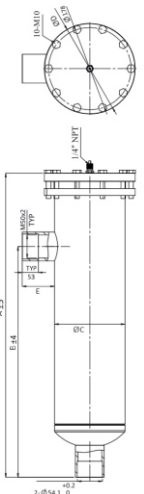
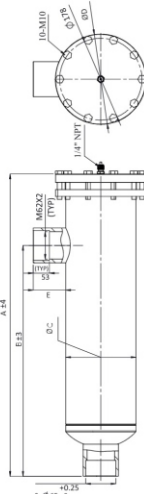
Applications

- **Commercial HVAC Systems:** Ideal for large-scale heating, ventilation, and air conditioning systems in commercial buildings.
- **Industrial Refrigeration:** Perfect for industrial cooling and refrigeration applications requiring high efficiency and durability.
- **Chillers and Freezers:** Suitable for large chillers and freezer systems demanding superior moisture removal.
- **Marine and Offshore:** Reliable performance in maritime and offshore HVAC&R systems.
- **Pharmaceutical and Food Processing:** Ensures optimal conditions in environments where strict temperature and humidity control are crucial.

REPLACEABLE CORE SHELL (DRC 100 SERIES)

Dry All
Full Range of HVAC&R Line Products

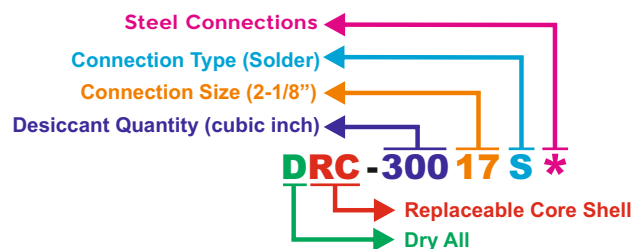
IMAGE, DRAWING & MODELS AVAILABLE

	DIMENSIONAL DATA	
	Drawing-1	Drawing-2
 <p>300 Series</p>		

Sr. No.	Model No.	Connection Size	A		B		ØC		D		E		Qty for Cores	Liquid Flow Capacity for R-22 in Tons @1 psi	Drawings
			(mm)	(inch)	(mm)	(inch)	(mm)	(inch)	(mm)	(inch)	(mm)	(inch)			
1	DRC - 30017S*	2-1/8" Solder*	659	25.94	500	19.69	152	5.98	196	7.72	70	2.75	3	95	1
2	DRC - 30021S*	2-5/8" Solder*	657	25.87	502	19.76	152	5.98	196	7.72	70	2.75	3	100	2

- 1) Maximum Working Pressure - 45 bar (653 psig)
- 2) Temperature Range : -40°C to +70°C
- 3)*Mark Connection Steel & Nickel Plated
- 4)1/4" NPT Connection is Available in Dry All Core Shell
- 5)[*] Denotes connections are of steel

Nomenclature



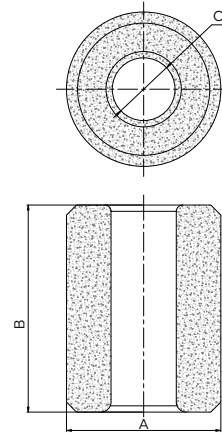
Flow Capacity

SR NO.	Model	Number of cores	Liquid Capacity (kW) (As per ARI 710-2004)				
			R134a	R404A	R507	R407C	R410A
1	DRC - 30017S	3					
2	DRC - 30021S		519.1	356.7	349.1	530.6	520.1

REPLACEABLE CORE SHELL (DRC 100 SERIES)

Dry All®
Full Range of HVAC&R Line Products

Core to be used DC-100



MODEL NO.	A		B		C	
	(mm)	(inch)	(mm)	(inch)	(mm)	(inch)
DC-100	123	4.85	165	6.50	52	2.05

Replaceable Core

DIMENSIONAL DATA

Drying Capacity

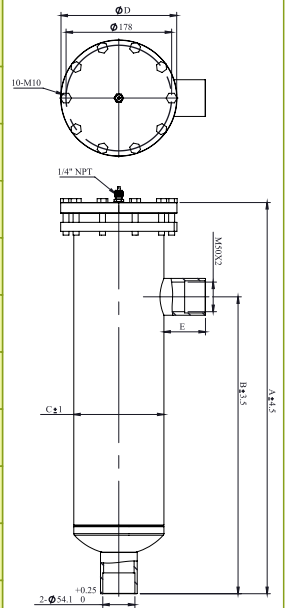
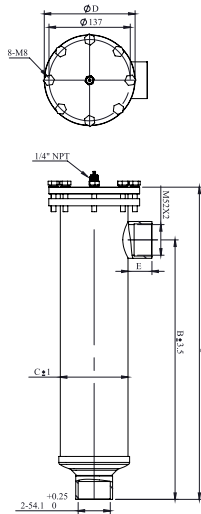
SR NO.	Model	Number of cores	Drying Capacity kg of Refrigerant					
			R134a		R404A/ R507A		R407C/R410A	
			24°C	52°C	24°C	52°C	24°C	52°C
1	DRC - 30017S	3	491	467	451	429	488	415
2	DRC - 30021S							

REPLACEABLE CORE SHELL (DRC 100 SERIES)

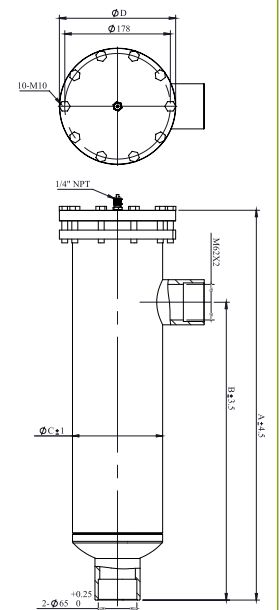
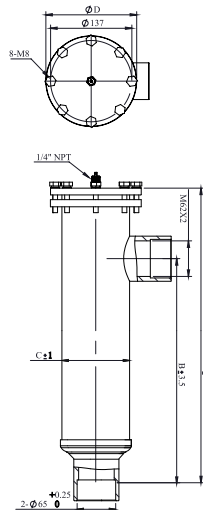
Dry All
Full Range of HVAC&R Line Products

Model Comparison

Dry All DRC 48 Series Model No.: DRC-14417S			Dry All DRC 100 Series Model No.: DRC-30017S		
Connection Type 2-1/8"			Connection Type 2-1/8"		
A - Overall Length	mm	537	A - Overall Length	mm	659
	inch	21.14		inch	25.94
B	mm	450	B	mm	500
	inch	17.72		inch	19.69
ØC - Shell Diameter	mm	114	ØC - Shell Diameter	mm	152
	inch	4.49		inch	5.98
ØD - Flange Diameter	mm	153	ØD - Flange Diameter	mm	196
	inch	6.02		inch	7.72
E - Connection Height	mm	49	E - Connection Height	mm	70
	inch	1.93		inch	2.75

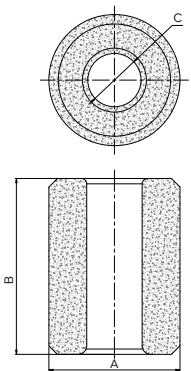
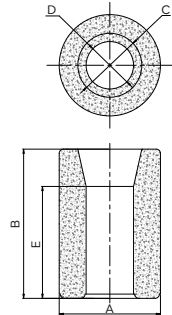
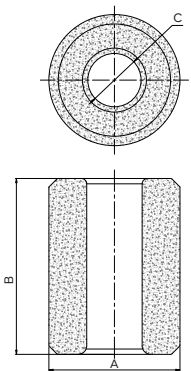


Dry All DRC 48 Series Model No.: DRC-14421S			Dry All DRC 100 Series Model No.: DRC-30021S		
Connection Type 2-5/8"			Connection Type 2-5/8"		
A - Overall Length	mm	532	A - Overall Length	mm	657
	inch	20.94		inch	25.87
B	mm	439	B	mm	502
	inch	17.28		inch	19.76
ØC - Shell Diameter	mm	114	ØC - Shell Diameter	mm	152
	inch	4.49		inch	5.98
ØD - Flange Diameter	mm	153	ØD - Flange Diameter	mm	196
	inch	6.02		inch	7.72
E - Connection Height	mm	50	E - Connection Height	mm	70
	inch	1.97		inch	2.75



REPLACEABLE CORE SHELL (DRC 100 SERIES)

Model Comparison

Dry All Core Model No. DC-48			Dry All Core Model No. DC-100			
A	mm	95	A	mm	123	 100% Molecular Sieves+
	inch	3.74		inch	4.85	
B	mm	140	B	mm	165	
	inch	5.51		inch	6.50	
C	mm	60	C	mm	52	
	inch	2.36		inch	2.05	
D	mm	45.5	D	mm	-	
	inch	1.75		inch	-	
E	mm	105	E	mm	-	
	inch	4.13		inch	-	
 100% Molecular Sieves+			 100% Molecular Sieves+			
Numbers of Core required : 3			Numbers of Core required : 3			

Note: Dry All reserves the right to alter its products without notice and will not accept any responsibility for possible errors in catalogues, brochures and other printed materials. Imitation / reproduction of information from this catalogue in part or whole cannot be done without prior approval in writing from our company.

Check Hologram for
Genuine Product

Dry All®
Full Range of HVAC&R Line Products

Manufactured by:

SAFE A&T Technology Private Limited

D-4, MIDC, Phase II, Dombivali (E),
Dist. Thane-421 201.

T : +91-(0)-251-2870680/81/82

Customer Care : +91 8181 994 994

E : info@dryall.net

W : www.dryall.net

File No.: L/S&M/01
REV: 00